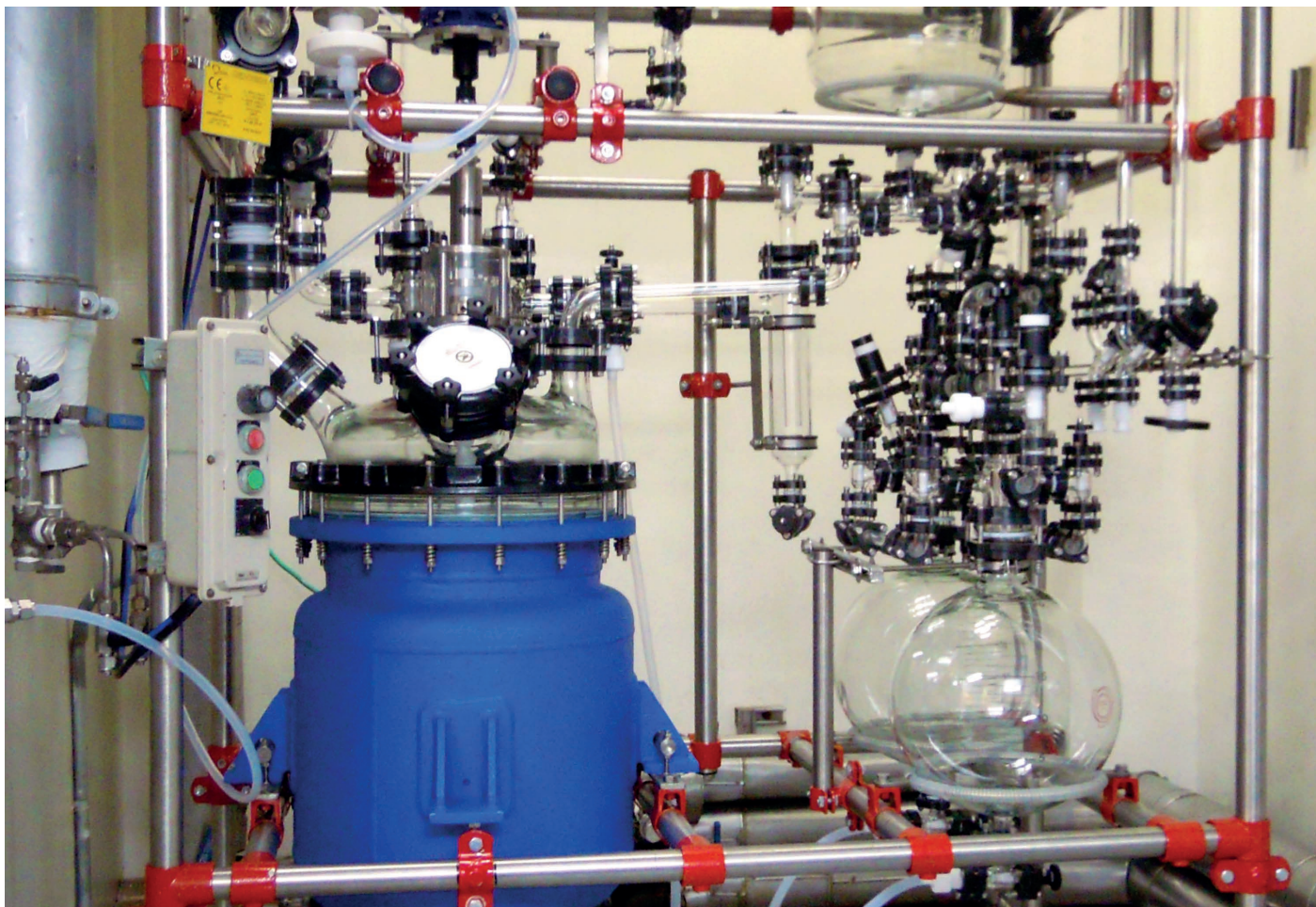


Distillation plant with 50 liters glass lined reactor and glass cover



## Plant for pilot and kilolab

Soffieria Sestese offers a glass lined steel plant, reactors and appropriate glass distillation overhead show reliable and best performance in the daily operation in Pilot Plants and kilolabs worldwide. They are tailored to different processes, temperature and pressure ranges, allow processing of most different chemicals. The condenser arrangement can be vertical or horizontal. Larger system with fully glass lined reactors use shell and tube type heat exchanger in the glass overhead.

### **Soffieria Sestese S.r.l.**

Via Riccardo Wagner, 291  
20831 Seregno (MB) – ITALY

Ph. +39 0362 17.90.991  
Fax +39 0362 17.95.763

VAT Ref. IT00846850964  
F.C. 07109250154

[info@soffieriasestese.it](mailto:info@soffieriasestese.it)



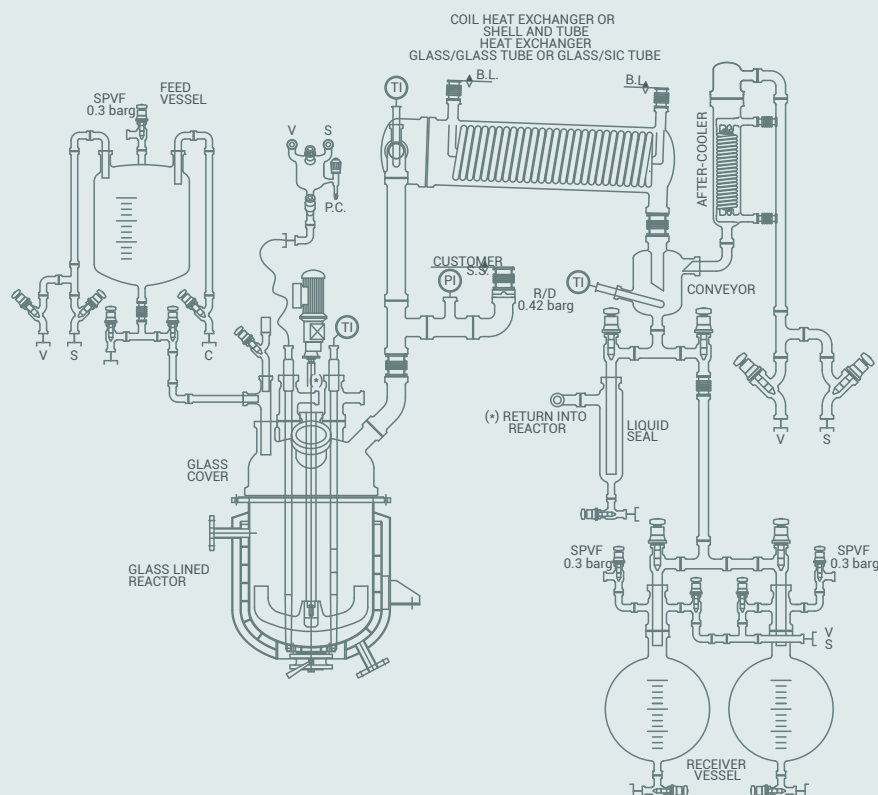
[www.soffieriasestese.it](http://www.soffieriasestese.it)

**LEGEND**

V: Vacuum

S: Vent

C: Load



Soffieria Sestese plants are well-suited to a wide range of tasks:

- Distillation
- Evaporation
- Multicomponent reactions
- Gas dispersion below liquid surface
- Rectification
- Extraction/phase separation in reactor vessel

**APPROVALS AND CERTIFICATES**

CE declarations of conformity (PED/ATEX) as well as declarations on FDA conformity are part of the documentation to validate our equipment for GMP applications.

**REACTOR WITH GLASS COVER / TECHNICAL SPECIFICATIONS**

DESCRIPTION		SUR/GL400	SUR/GL630
Reactor Nominal Capacity	lt.	400	600
Heat Exchanger (Exchange Surface)	m <sup>2</sup>	4.0	6.0
After Cooler (Exchange Surface)	m <sup>2</sup>	1.0	1.5
Jacket Design Pressure	barg	-1 ÷ +10	-1 ÷ +10
Vessel Design Pressure	barg	-1 ÷ +1	-1 ÷ +1
Plant Working Temperature	°C	-20 ÷ +135	-20 ÷ +135
Plant Design Temperature	°C	-25 ÷ +150	-25 ÷ +150
Plant Working Pressure	barg	+0.5	+0.5
Feed Vessel	No.xlt.	2x50	1x100
Receiver Vessel	No.xlt.	2x50	2x100