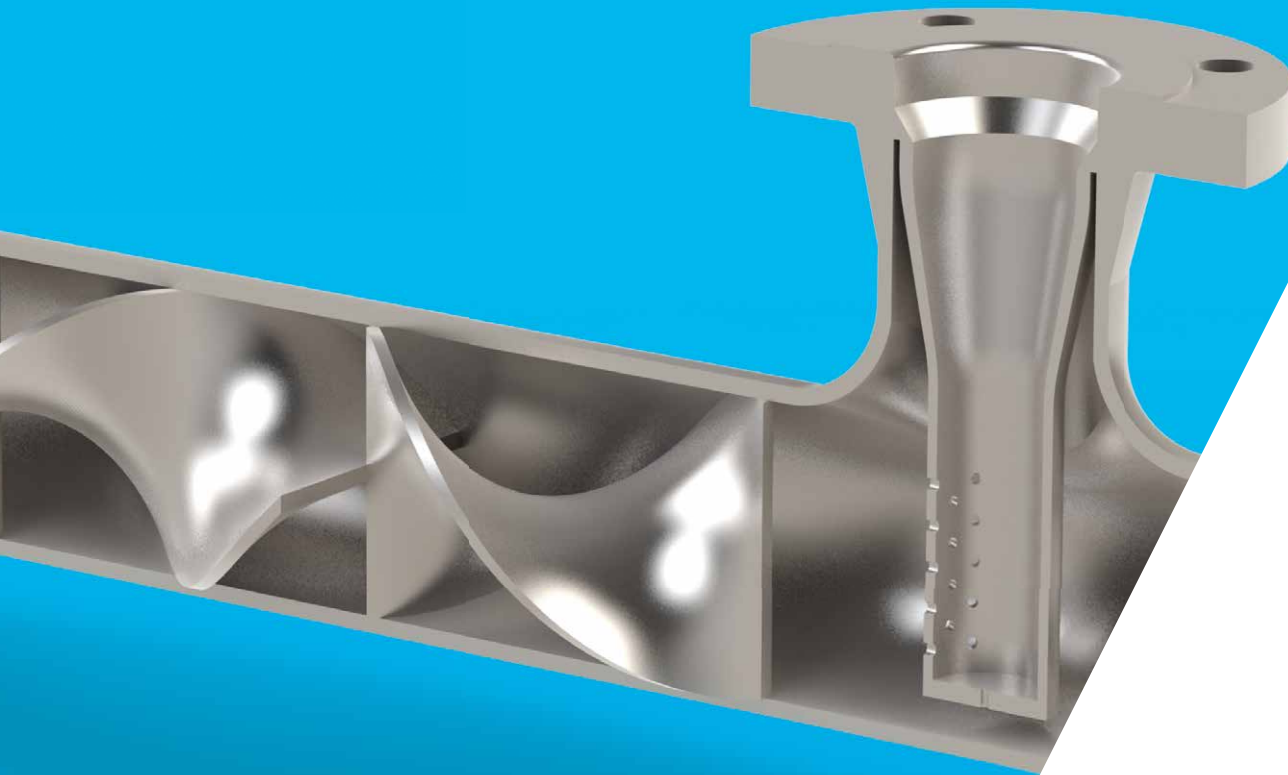


Mixing and conditioning of liquids and gases

# STATIC MIXERS & HEAT EXCHANGERS



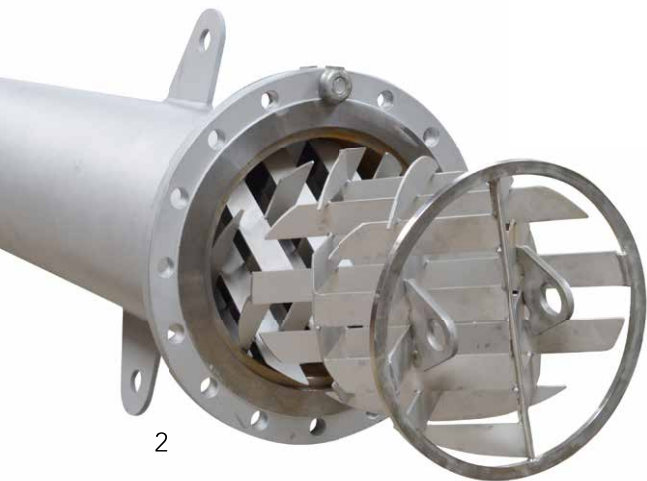
**PRIMIX**<sup>®</sup>  
PERFORMANCE BY DESIGN

# STATIC MIXERS & HEAT EXCHANGERS

PRIMIX has been going for over 30 years and has built up a reputation as an international supplier of top quality static mixers and heat exchangers. Most of the mixers are developed specifically based on the customer's process application. This is done with great care and attention by an experienced and highly-trained workforce.

## PRIMIX PERFORMANCE BY DESIGN

At PRIMIX we believe that maximum performance in the process can only be achieved with the right design. In the design we combine our extensive knowledge in the field of fluid dynamics with a very precise way of working. All parameters and preconditions are considered before the design process is started. We can think outside the box and come up with solutions for new applications and complex issues. Only when we know for sure that all parameters have been identified, will we design the best mixer or heat exchanger for your process. Certification and classification are seen as an integral part of the design process and this guarantees components that deliver maximum performance in the process and also meet all certification and document requirements.



## ADVANTAGES

- Highly efficient static mixers and heat exchangers that link 100% into the process
- Energy-and cost-saving, sustainable and maintenance-free technology
- Partner for engineering companies and industry with worldwide support
- Over 30 years experience and extensive knowledge of fluid dynamics
- Mixer sizing and design with PRIMIX calculation software and 3D CAD software
- Full mechanical and performance guarantee
- Single source – own engineering and production facility for quick, reliable delivery
- State of the art R&D - with support from TU Delft and TU Eindhoven
- Flexible organisation with short lines of communication

# THE RIGHT **SOLUTION** FOR EVERY **APPLICATION**

Whether you are looking for a static mixer for a large-scale chemical process, to cool down food products or to mix additives in water treatment, PRIMIX offers the right solution for every application.

PRIMIX static mixers and heat exchangers will allow you to accurately mix, process and condition liquids, gasses and dispersions.

PRIMIX mixers and heat exchangers are fully geared to the desired process flow volumes with flow rate diameters varying from 2 metres to 4 mm. Depending on the process; the finish may be electro-polished, extra durable and/or fully hygienic.





# STATIC MIXERS

A PRIMIX static mixer lets you create a homogeneously distributed mixture between liquids and/or gasses in a continuous process. This is done without any moving part, with the result that no extra electrical supply or mechanical elements are required. This makes the PRIMIX static mixers very low-maintenance components and extremely safe from a process-technical point of view.

A PRIMIX static mixer is easy to clean in a CIP cycle and depending on the process requirements, the system may have a fully sanitary/sterile/aseptic finish. In the case of static mixers with removable mixer elements, cleaning can be done externally. This is very practical for example in the processing of highly viscous media.

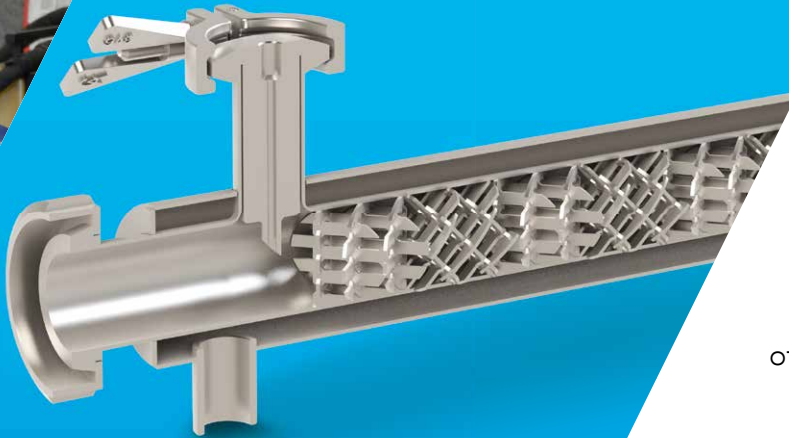


## MIXING LIQUIDS & GASES



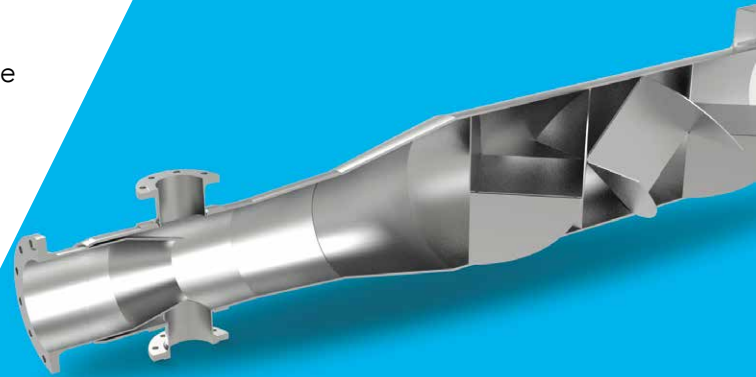
## LAMINAR FLOW

In a static mixer based on the laminar principle, the flow is repeatedly split into sub-flows, which are then merged again. The correct pitch creates a balanced flow from outside to inside and vice versa. The medium to be mixed is thus mixed in a large number of thin layers and the number of layers created is what determines the degree of mixing.



## TURBULENT FLOW

With a static mixer based on the turbulent mixing principle, the mixing effect is mainly achieved by internal rotation and the shearing of the layers of fluid at the point where the direction of rotation is reversed. When small rates of shearing are required, a pitch between two rotations can be programmed. This pitch delays the rotation process and causes an additional mixing effect. After that, the reversed rotation starts more slowly.



### Mixing for each volume flow, density, viscosity and substance-specific properties

- Liquid – liquid mixing
  - Miscible liquids, i.e. water & caustic
  - None-miscible liquids, i.e. water & oil
- Liquid – gas mixing, i.e. water & CO<sub>2</sub>
- Gas – gas mixing, i.e. flue gas & oxygen

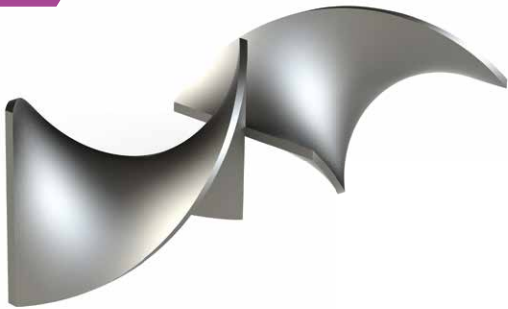
### Advantages:

- No moving parts
- No mechanical seals
- No maintenance
- No leakage
- Predictable homogeneity
- Low energy dissipation
- Low investment / short return of investment
- Easy scale-up
- In line processing

# OVERVIEW MIXERS

With the PMS, PMQ, PMX and PMV mixers, the performance is geared 100% to the process

PMS



- Standard helical or spiral shaped elements
- Up to  $\pm 160$  mm diameter
- Suitable for basic mixing applications, liquid and gas
- Used for heat transfer enhancement
- Available in wide range of materials

PMQ



- Quatro shaped elements
- Performance equal to PMS
- From  $\pm 160$  mm diameter to infinity
- Suitable for basic mixing applications: liquid and gas

PMX



- X-crossed type element
- Wide range of sizes
- Relative high pressure drops and almost dead spot free
- Very suitable for high viscosity mixing

PMV



- From  $\pm 50$  mm diameter to infinity
- Very suitable in large diameters
- Most suitable for gas mixing or high contact surface
- Used both in gas and liquid





# QUICK DELIVERY

PRIMIX can supply over 10,000 variants of quality mixers from stock. These mixers from the QDS range are put together in no time from loose stock components and the same engineering expertise is applied as in the PRIMIX custom-made mixers.

## **QDS** Static mixers available from stock

QDS mixers are if necessary be delivered within 48 hours. Just like the custom-made mixers, all QDS mixers are fully geared to the process and designed to the process parameters indicated.

- AISI 316L and PVC
- Up to  $\pm 160$  mm diameter
- Suitable for all basic mixing applications of liquid and gas



QDS Quick delivery system - 48 hour delivery  
Advanced custom mixer technology at very attractive conditions

# HEAT EXCHANGERS

The PRIMIX spiral-shaped mixer element is the basis of the PRIMIX heat exchangers that can be used to heat and cool viscous products.

With its advanced design, the PRIMIX heat exchanger holds a unique position between conventional shell and tube heat exchangers. All PRIMIX heat exchangers are designed and produced to customer specifications. The heat exchangers are available for the treatment of all sorts of viscous liquids.

## Quicker refreshment, better heat transfer

The design of the spiral-shaped element naturally provides increased transfer – up to a factor of 3. This is caused by the strong radial flow that generates an increase in the refreshment rate on the walls of the process pipe. When low tolerances and nickel-high vacuum-brazed techniques are implemented, this factor may even add up to a factor of 10.

Improved heat transfer.  
Lower pressure drop and  
shorter residence times



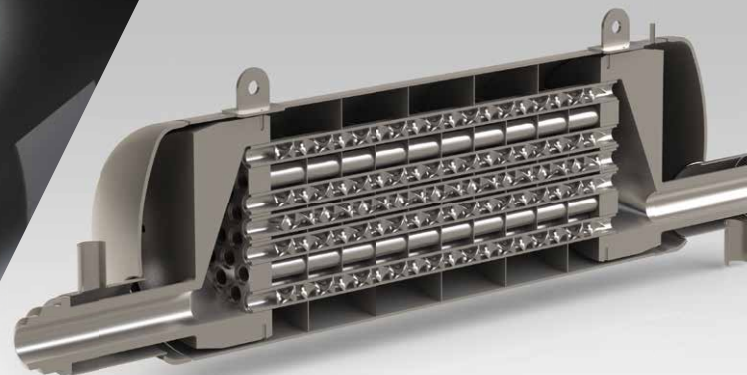
## ACT

### With ACT 20% – 100% more transfer of heat

The advanced connection technology (ACT) applied between process tube and mixer elements results in additional surface with exchange rates that are equal to the base material of process tube and mixer element. As a result of this property, the surface of each mixer element will act as additional heat transfer, which results in 20% to 100% better heat transfer compared to conventional heat exchangers.

#### Advantages:

- Special distribution head and mixer element connection result in true plug flow preventing product degradation
- Improved heater transfer rate – resulting in 30 – 40% lower weight
- Low pressure drop at product and service fluid side
- Lower volumes and shorter residence times

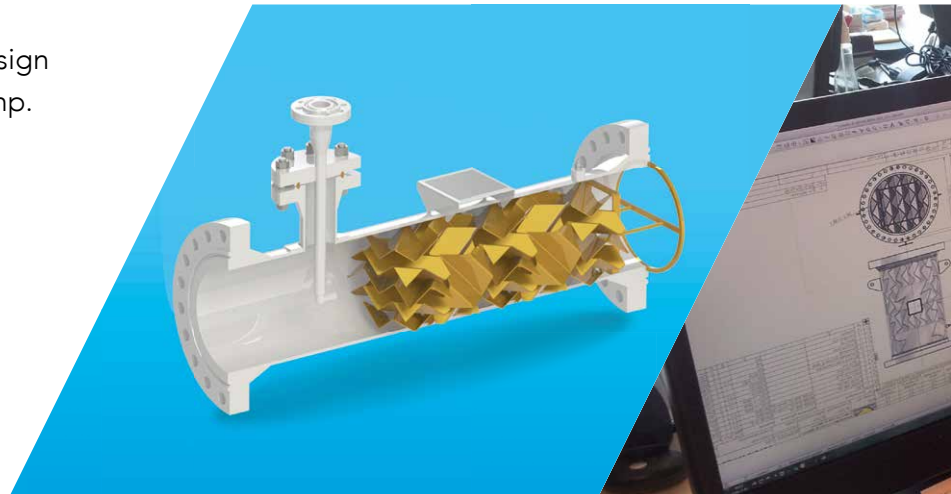


# IT'S ALL IN THE DESIGN

At PRIMIX design is more than just design. It involves engineering and thinking through the process with the customer. Clearly setting the relevant parameters and where necessary asking the critical questions. The aim of this is to achieve the maximum performance in the process. The design envisaged is translated into our own PRIMIX Dynamics software and this is then designed in SOLIDWORKS®

The Design also involves providing a disciplined, manageable document flow. At PRIMIX, we understand that Design is backed up with carefully matching certificates and documents. Creating Data, Mechanical and Record books is thus an integral part of the design.

PRIMIX also designs and delivers under different design codes, including: EN-13445, PED, ASME and U-Stamp. PRIMIX is of course ISO-9001 certified.



PRIMIX applies rigorous standards when it comes to transport conditions and packaging. At PRIMIX, this is already factored in at the design phase to ensure that your process equipment arrives on site in perfect condition.

GENERAL			NON DESTRUCTIVE EXAMINATION		STANDARD
DESCRIPTION	VALUE	DESCRIPTION	TEST METHOD		
Draw number	Q1-0000	Indicative test	Yes	ASME III	7
Serial number	Q1-0000-01	Hydrographic test (HT)	Yes	ASME III	
Quantity required	1	Die dimensional test (DT)	Yes	ASME III	
Material	304L	Magnetic particle test (MT)	No		
Heat treating position	Isotermal	Positive penetration test (PT)	No		
Non-destructive examination	Nondestructive	Visual test (VT)	Yes	For all parts	
Material specification	ASTM A 312 Type 304L	Pressure Vessel Qualification (PQ)	Yes		
Welding	Welding	Welding adhesion test	Yes		
		Visual inspection	Yes	ASME III	

**AS BUILT**

Nozzle	Material	Rating	Type	Fabrication	Maximum	Remarks	Range (inches)
N1	304L	12"	600W VLN RTJ ASME B16.5	2.5 - 3.5	µm		12000 - 20000
N2	304L	12"	600W VLN RTJ ASME B16.5	5.0 - 2.5	µm		12000 - 20000
N3	304L	4"	600W VLN RTJ ASME B16.5	5.0 - 2.5	µm		12000 - 20000
N4	304L	2"	600W VLN RTJ ASME B16.5	5.0 - 2.5	µm		12000 - 20000
N5	304L	2"	600W VLN RTJ ASME B16.5	5.0 - 2.5	µm		12000 - 20000
N6	304L	2"	600W VLN RTJ ASME B16.5	5.0 - 2.5	µm		12000 - 20000
N7	304L	2"	600W VLN RTJ ASME B16.5	5.0 - 2.5	µm		12000 - 20000
N8	304L	2"	600W VLN RTJ ASME B16.5	5.0 - 2.5	µm		12000 - 20000
N9	304L	2"	600W VLN RTJ ASME B16.5	5.0 - 2.5	µm		12000 - 20000
N10	304L	2"	600W VLN RTJ ASME B16.5	5.0 - 2.5	µm		12000 - 20000
N11	304L	2"	600W VLN RTJ ASME B16.5	5.0 - 2.5	µm		12000 - 20000
N12	304L	2"	600W VLN RTJ ASME B16.5	5.0 - 2.5	µm		12000 - 20000
N13	304L	2"	600W VLN RTJ ASME B16.5	5.0 - 2.5	µm		12000 - 20000
N14	304L	2"	600W VLN RTJ ASME B16.5	5.0 - 2.5	µm		12000 - 20000
N15	304L	2"	600W VLN RTJ ASME B16.5	5.0 - 2.5	µm		12000 - 20000
N16	304L	2"	600W VLN RTJ ASME B16.5	5.0 - 2.5	µm		12000 - 20000
N17	304L	2"	600W VLN RTJ ASME B16.5	5.0 - 2.5	µm		12000 - 20000
N18	304L	2"	600W VLN RTJ ASME B16.5	5.0 - 2.5	µm		12000 - 20000
N19	304L	2"	600W VLN RTJ ASME B16.5	5.0 - 2.5	µm		12000 - 20000
N20	304L	2"	600W VLN RTJ ASME B16.5	5.0 - 2.5	µm		12000 - 20000
N21	304L	2"	600W VLN RTJ ASME B16.5	5.0 - 2.5	µm		12000 - 20000
N22	304L	2"	600W VLN RTJ ASME B16.5	5.0 - 2.5	µm		12000 - 20000
N23	304L	2"	600W VLN RTJ ASME B16.5	5.0 - 2.5	µm		12000 - 20000
N24	304L	2"	600W VLN RTJ ASME B16.5	5.0 - 2.5	µm		12000 - 20000
N25	304L	2"	600W VLN RTJ ASME B16.5	5.0 - 2.5	µm		12000 - 20000
N26	304L	2"	600W VLN RTJ ASME B16.5	5.0 - 2.5	µm		12000 - 20000
N27	304L	2"	600W VLN RTJ ASME B16.5	5.0 - 2.5	µm		12000 - 20000
N28	304L	2"	600W VLN RTJ ASME B16.5	5.0 - 2.5	µm		12000 - 20000
N29	304L	2"	600W VLN RTJ ASME B16.5	5.0 - 2.5	µm		12000 - 20000
N30	304L	2"	600W VLN RTJ ASME B16.5	5.0 - 2.5	µm		12000 - 20000
N31	304L	2"	600W VLN RTJ ASME B16.5	5.0 - 2.5	µm		12000 - 20000
N32	304L	2"	600W VLN RTJ ASME B16.5	5.0 - 2.5	µm		12000 - 20000
N33	304L	2"	600W VLN RTJ ASME B16.5	5.0 - 2.5	µm		12000 - 20000
N34	304L	2"	600W VLN RTJ ASME B16.5	5.0 - 2.5	µm		12000 - 20000
N35	304L	2"	600W VLN RTJ ASME B16.5	5.0 - 2.5	µm		12000 - 20000
N36	304L	2"	600W VLN RTJ ASME B16.5	5.0 - 2.5	µm		12000 - 20000
N37	304L	2"	600W VLN RTJ ASME B16.5	5.0 - 2.5	µm		12000 - 20000
N38	304L	2"	600W VLN RTJ ASME B16.5	5.0 - 2.5	µm		12000 - 20000
N39	304L	2"	600W VLN RTJ ASME B16.5	5.0 - 2.5	µm		12000 - 20000
N40	304L	2"	600W VLN RTJ ASME B16.5	5.0 - 2.5	µm		12000 - 20000
N41	304L	2"	600W VLN RTJ ASME B16.5	5.0 - 2.5	µm		12000 - 20000
N42	304L	2"	600W VLN RTJ ASME B16.5	5.0 - 2.5	µm		12000 - 20000
N43	304L	2"	600W VLN RTJ ASME B16.5	5.0 - 2.5	µm		12000 - 20000
N44	304L	2"	600W VLN RTJ ASME B16.5	5.0 - 2.5	µm		12000 - 20000
N45	304L	2"	600W VLN RTJ ASME B16.5	5.0 - 2.5	µm		12000 - 20000
N46	304L	2"	600W VLN RTJ ASME B16.5	5.0 - 2.5	µm		12000 - 20000
N47	304L	2"	600W VLN RTJ ASME B16.5	5.0 - 2.5	µm		12000 - 20000
N48	304L	2"	600W VLN RTJ ASME B16.5	5.0 - 2.5	µm		12000 - 20000
N49	304L	2"	600W VLN RTJ ASME B16.5	5.0 - 2.5	µm		12000 - 20000
N50	304L	2"	600W VLN RTJ ASME B16.5	5.0 - 2.5	µm		12000 - 20000
N51	304L	2"	600W VLN RTJ ASME B16.5	5.0 - 2.5	µm		12000 - 20000
N52	304L	2"	600W VLN RTJ ASME B16.5	5.0 - 2.5	µm		12000 - 20000
N53	304L	2"	600W VLN RTJ ASME B16.5	5.0 - 2.5	µm		12000 - 20000
N54	304L	2"	600W VLN RTJ ASME B16.5	5.0 - 2.5	µm		12000 - 20000
N55	304L	2"	600W VLN RTJ ASME B16.5	5.0 - 2.5	µm		12000 - 20000
N56	304L	2"	600W VLN RTJ ASME B16.5	5.0 - 2.5	µm		12000 - 20000
N57	304L	2"	600W VLN RTJ ASME B16.5	5.0 - 2.5	µm		12000 - 20000
N58	304L	2"	600W VLN RTJ ASME B16.5	5.0 - 2.5	µm		12000 - 20000
N59	304L	2"	600W VLN RTJ ASME B16.5	5.0 - 2.5	µm		12000 - 20000
N60	304L	2"	600W VLN RTJ ASME B16.5	5.0 - 2.5	µm		12000 - 20000
N61	304L	2"	600W VLN RTJ ASME B16.5	5.0 - 2.5	µm		12000 - 20000
N62	304L	2"	600W VLN RTJ ASME B16.5	5.0 - 2.5	µm		12000 - 20000
N63	304L	2"	600W VLN RTJ ASME B16.5	5.0 - 2.5	µm		12000 - 20000
N64	304L	2"	600W VLN RTJ ASME B16.5	5.0 - 2.5	µm		12000 - 20000
N65	304L	2"	600W VLN RTJ ASME B16.5	5.0 - 2.5	µm		12000 - 20000
N66	304L	2"	600W VLN RTJ ASME B16.5	5.0 - 2.5	µm		12000 - 20000
N67	304L	2"	600W VLN RTJ ASME B16.5	5.0 - 2.5	µm		12000 - 20000
N68	304L	2"	600W VLN RTJ ASME B16.5	5.0 - 2.5	µm		12000 - 20000
N69	304L	2"	600W VLN RTJ ASME B16.5	5.0 - 2.5	µm		12000 - 20000
N70	304L	2"	600W VLN RTJ ASME B16.5	5.0 - 2.5	µm		12000 - 20000
N71	304L	2"	600W VLN RTJ ASME B16.5	5.0 - 2.5	µm		12000 - 20000
N72	304L	2"	600W VLN RTJ ASME B16.5	5.0 - 2.5	µm		12000 - 20000
N73	304L	2"	600W VLN RTJ ASME B16.5	5.0 - 2.5	µm		12000 - 20000
N74	304L	2"	600W VLN RTJ ASME B16.5	5.0 - 2.5	µm		12000 - 20000
N75	304L	2"	600W VLN RTJ ASME B16.5	5.0 - 2.5	µm		12000 - 20000
N76	304L	2"	600W VLN RTJ ASME B16.5	5.0 - 2.5	µm		12000 - 20000
N77	304L	2"	600W VLN RTJ ASME B16.5	5.0 - 2.5	µm		12000 - 20000
N78	304L	2"	600W VLN RTJ ASME B16.5	5.0 - 2.5	µm		12000 - 20000
N79	304L	2"	600W VLN RTJ ASME B16.5	5.0 - 2.5	µm		12000 - 20000
N80	304L	2"	600W VLN RTJ ASME B16.5	5.0 - 2.5	µm		12000 - 20000
N81	304L	2"	600W VLN RTJ ASME B16.5	5.0 - 2.5	µm		12000 - 20000
N82	304L	2"	600W VLN RTJ ASME B16.5	5.0 - 2.5	µm		12000 - 20000
N83	304L	2"	600W VLN RTJ ASME B16.5	5.0 - 2.5	µm		12000 - 20000
N84	304L	2"	600W VLN RTJ ASME B16.5	5.0 - 2.5	µm		12000 - 20000
N85	304L	2"	600W VLN RTJ ASME B16.5	5.0 - 2.5	µm		12000 - 20000
N86	304L	2"	600W VLN RTJ ASME B16.5	5.0 - 2.5	µm		12000 - 20000
N87	304L	2"	600W VLN RTJ ASME B16.5	5.0 - 2.5	µm		12000 - 20000
N88	304L	2"	600W VLN RTJ ASME B16.5	5.0 - 2.5	µm		12000 - 20000
N89	304L	2"	600W VLN RTJ ASME B16.5	5.0 - 2.5	µm		12000 - 20000
N90	304L	2"	600W VLN RTJ ASME B16.5	5.0 - 2.5	µm		12000 - 20000
N91	304L	2"	600W VLN RTJ ASME B16.5	5.0 - 2.5	µm		12000 - 20000
N92	304L	2"	600W VLN RTJ ASME B16.5	5.0 - 2.5	µm		12000 - 20000
N93	304L	2"	600W VLN RTJ ASME B16.5	5.0 - 2.5	µm		12000 - 20000
N94	304L	2"	600W VLN RTJ ASME B16.5	5.0 - 2.5	µm		12000 - 20000
N95	304L	2"	600W VLN RTJ ASME B16.5	5.0 - 2.5	µm		12000 - 20000
N96	304L	2"	600W VLN RTJ ASME B16.5	5.0 - 2.5	µm		12000 - 20000
N97	304L	2"	600W VLN RTJ ASME B16.5	5.0 - 2.5	µm		12000 - 20000
N98	304L	2"	600W VLN RTJ ASME B16.5	5.0 - 2.5	µm		12000 - 20000
N99	304L	2"	600W VLN RTJ ASME B16.5	5.0 - 2.5	µm		12000 - 20000
N100	304L	2"	600W VLN RTJ ASME B16.5	5.0 - 2.5	µm		12000 - 20000



Auteursrecht voorbehouden volgens de wet / Copyrights reserved according to law







# PERFORMANCE FOR YOUR APPLICATION

PRIMIX static mixers and heat exchangers have proven themselves highly reliable in a wide variety of applications. From conventional bulk processes, precision mixing at millilitre level and also in critical processes, where the risk of explosion, toxicity, corrosiveness and temperature sensitivity in media play an important role. It is mainly in these applications that the PRIMIX systems offer huge benefits.

*" Besides improved heat transfer, a small spread of residence time is of major importance. During the cooling process, the polymer flow reacts as well and polymer flowing through the system at a longer residence time than foreseen can harm the quality of the end product. To solve this problem, PRIMIX has chosen to design unique manifolds that ensure a perfect spread of product over the parallel process tubes, while dead spots are completely eliminated."*



## PETROCHEMICAL INDUSTRY

- Crude oil blending and desalting with water
- Blending of diesel, gasoline, lubricants and natural gases
- Wash water mixers
- Crude homogenization before BSW measurement
- Sweetening of kerosene and gasoline



## CHEMICAL INDUSTRY

- Chemical liquid mixing and dilution
- Tube reactors
- Mixing of gas streams
- Evaporation
- pH correction by adding alkali or acid
- Gas liquid contacting

## POLYMERS AND FIBRES

- Polymer melt homogenization
- Removal of volatile components
- Cooling of fibre / polymer melts
- Ad-mixing of additive
- Use in production systems for PS, PET, EPS and PLA
- Plastic processing - Injection moulding

Obtaining consistent mixing concentrations, temperatures and resident times ... resulting in maximum process performance

# FOOD AND BEVERAGES

- Blending e.g. flavours, colour additives or fruits into chocolates, yoghurt and fondant
- Temperature conditioning e.g. cooling of spreads and butters
- Pasteurization
- Carbonization of beer
- Homogenization of products in sweets production



# PHARMACEUTICAL INDUSTRY

- Penicillin production
- Inhalable insulin production
- Cosmetics
- Mixing additives into soaps
- Pasteurisation and/or sterilization
- Detergent production

# WATER AND WASTEWATER TREATMENT

- Ozonisation of water
- Aeration of water
- Mixing of HCL, NaOH,  $H_2SO_4$ , lime in waste water
- Water preparation (pH and temperature)
- Desalination of seawater
- Mixing of flocculants into waste water or sludge



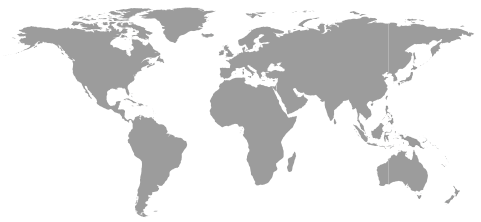
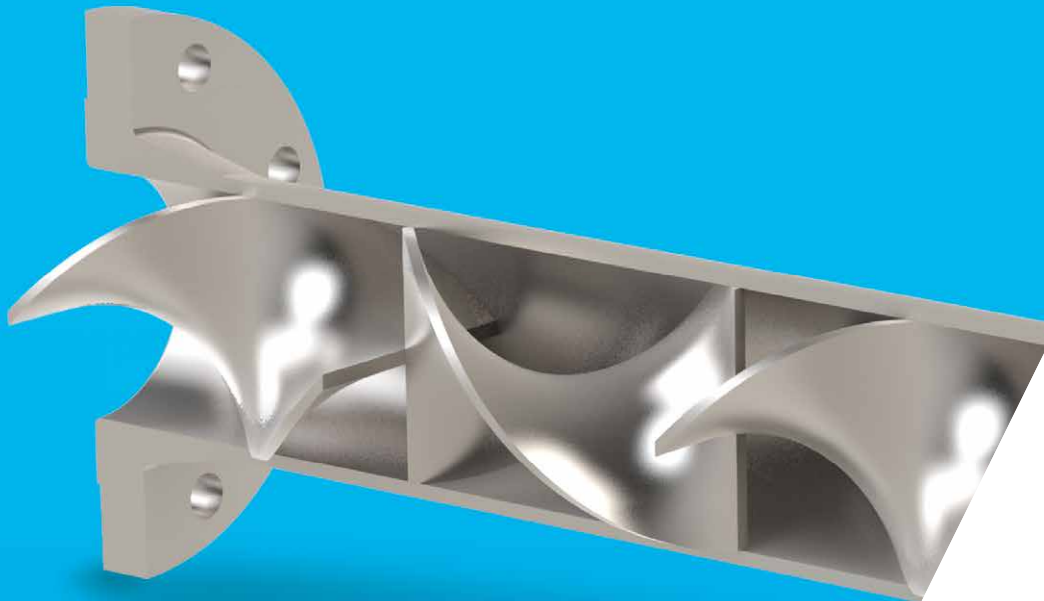


## CIP and Sanitary mixers

Within the food and pharmaceutical industry, aspects like CIP cleaning, smooth and/or polished surfaces and sanitary connections are of major importance when it comes to achieving low germ counts. Day to day practice has shown that compared to an empty pipe, the use of static mixer elements leads to considerably better cleaning results. The forced refreshment and higher product velocities at the inner wall of the process tube are what cause this positive result.



Easy cleaning and sterilisation. Shorter process times and more consistent product quality



**PRIMIX**

Nijverheidsweg 17F  
3641 RP Mijdrecht  
The Netherlands

Postal address:  
P.O. Box 220  
3640 AE Mijdrecht  
The Netherlands

T +31 (0) 297 28 77 78  
E [info@primix.eu](mailto:info@primix.eu)

[www.primix.eu](http://www.primix.eu)