



Akustik+Sylomer®



CHRISTIAN
BERNER

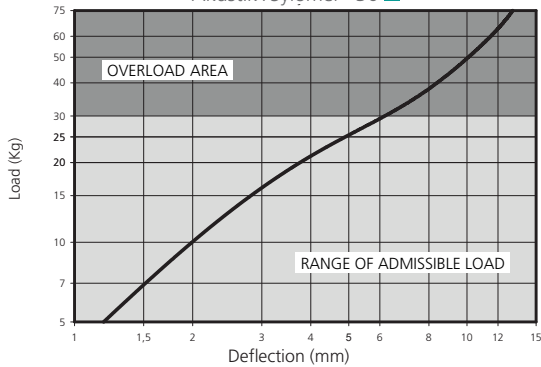
Expect more

ACOUSTIC HANGERS

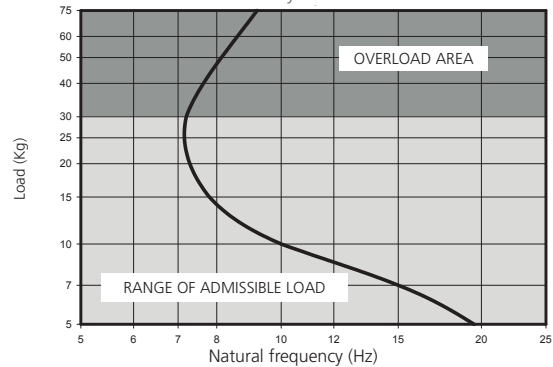
Akustik+Sylomer®: Models and dimensions

TYPES OF SYLOMER®

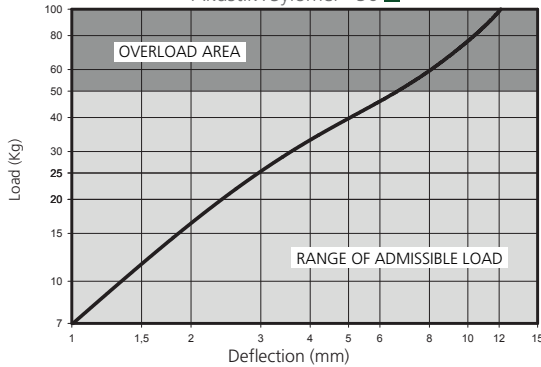
LOAD DEFLECTION GRAPH
Akustik+Sylomer® 30 ■



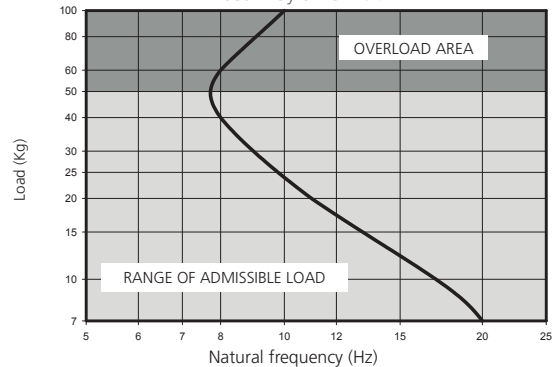
NATURAL FREQUENCY GRAPHS
Akustik+Sylomer® 30 ■



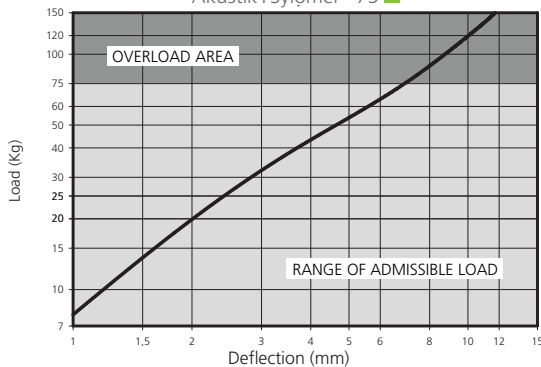
LOAD DEFLECTION GRAPH
Akustik+Sylomer® 50 ■



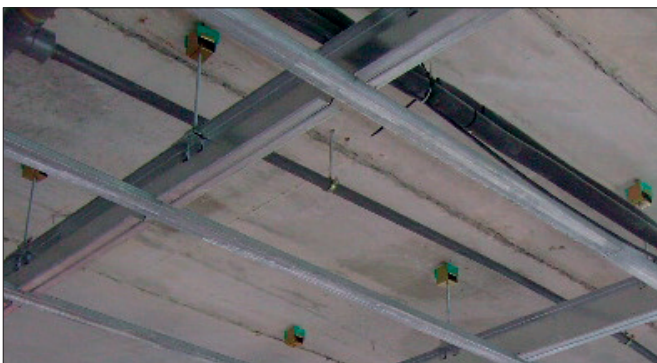
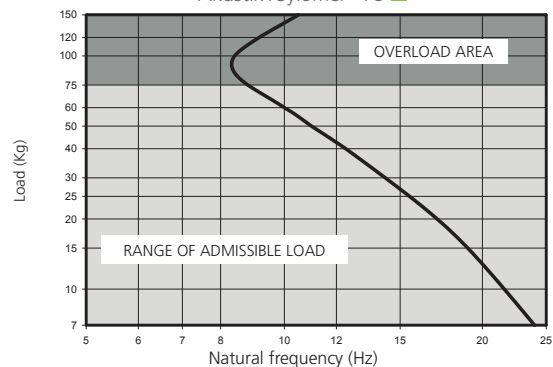
NATURAL FREQUENCY GRAPHS
Akustik+Sylomer® 50 ■



LOAD DEFLECTION GRAPH
Akustik+Sylomer® 75 ■



NATURAL FREQUENCY GRAPHS
Akustik+Sylomer® 75 ■



Application of an Akustik 4+Sylomer 30 type A.



Application of an Akustik Super T60 +Sylomer 30 type B.

ACOUSTIC HANGERS

Akustik+Sylomer®: Models and dimensions



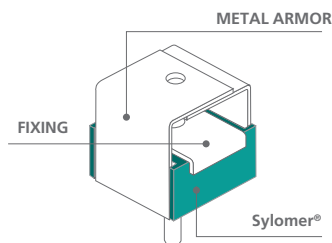
PRODUCT DESCRIPTION

These antivibration mounts have been conceived for the suspension of false ceilings, vibrating pipelines and machinery that has to be suspended.

The excellent properties of the Sylomer® micro-cellular polyurethane material achieve elevated isolation values as opposed to other mounts that use rubber or cork, or a combination of both. These antivibration mounts are manu-

factured in two special mixes of Sylomer® to adapt better to the load of each application.

A great variety of fixing metal armor and elements facilitate the installation and to adapt better to each type of job. Their rugged metal parts can withstand tensile stresses from 650Kg to 1000Kg. They are supplied with an anticorrosive treatment that can withstand the toughest environments.



	<p>Akustik 1</p>	<p>It is secured directly to the ceiling by means of two holes.</p>		
	<p>Akustik 3</p>	<p>It is secured directly to the ceiling with a screw and locking nut.</p>		
	<p>Akustik 4</p>	<p>It is secured with a screw via a nut welded to the metal armor.</p>		
	<p>Akustik 4 High</p>	<p>It is secured with a screw via a nut welded to the metal armor.</p>		
	<p>Akustik Rapid T47</p>	<p>Designed to be secured to most profiles on the market. Its design makes for easy and safe installations.</p>		
	<p>Akustik Safety</p>	<p>Its gravitational system guarantees correct installation and offers greater safety, preventing elements from becoming detached.</p>		

AKUSTIK + sylomer[®] by getzner

ACOUSTIC HANGERS Akustik+Sylomer[®] Range

REF AMC	SUMMARY	MAX. LOAD (Kg)	CODE
 Akustik 1+Sylomer [®] 30 Type A	Metal armor of the Akustik 1 secured to the ceiling by an M6 screw and with a nut.	30	23501
 Akustik 3+Sylomer [®] 30 Type A	Metal armor of the Akustik 3 secured to the ceiling by an M6 screw and with a nut.	30	23503
 Akustik 4+Sylomer [®] 30 Type A	Metal armor of the Akustik 4 secured to the ceiling by an M6 screw and with a nut.	30	23505
 Akustik 4 High+Sylomer [®] 30 Type A	Metal armor of the Akustik 4 secured to the ceiling by an M6 screw and with a nut.	30	23537
 Akustik Rapid+Sylomer [®] 30 Type A	Metal armor of the Akustik rapid secured to the ceiling by an M6 screw and with a nut.	30	23507
 Akustik Safety+Sylomer [®] 30 Type A	Metal armor of the Akustik Safety secured to the ceiling by an M6 screw and with a nut.	30	23508
 Akustik 1+Sylomer [®] 30 Type B	Metal armor of the Akustik 3 secured to the ceiling by a welded M6 nut.	30	23509
 Akustik 3+Sylomer [®] 30 Type B	Metal armor of the Akustik 4 secured to the ceiling by a welded M6 nut.	30	23511
 Akustik 4+Sylomer [®] 30 Type B	Metal armor of the Akustik Rapid secured to the ceiling by a welded M6 nut.	30	23513
 Akustik 4 High+Sylomer [®] 30 Type B	Metal armor of the Akustik Rapid secured to the ceiling by a welded M6 nut.	30	23538
 Akustik Rapid+Sylomer [®] 30 Type B	Metal armor of the Akustik Safety secured to the ceiling by an M6 screw.	30	23515
 Akustik Safety+Sylomer [®] 30 Type B	Metal armor of the Akustik Safety secured to the ceiling by a welded M6 nut.	30	23516

ACOUSTIC HANGERS

Akustik Super+Sylomer® Range

REF. AMC	SUMMARY	MAX. LOAD (KG)	CODE
 Akustik Super T60 +Sylomer® 30 Type A	Metal armor of the Akustik Super secured to the ceiling by an M6 screw.	30	23831
 Akustik Super T60 +Sylomer® 30 Type B	Metal armor of the Akustik Super secured to the ceiling by an M6 screw.	30	23832
 Akustik Super T47 +Sylomer® 30 Type A	Metal armor of the Akustik Super secured to the ceiling by an M6 screw.	30	23821
 Akustik Super T47 +Sylomer® 30 Type B	Metal armor of the Akustik Super secured to the ceiling by an M6 screw.	30	23822
 Akustik Super T60 +Sylomer® 50 Type A	Metal armor of the Akustik Super secured to the ceiling by an M6 screw.	50	23590
 Akustik Super T60 +Sylomer® 50 Type B	Metal armor of the Akustik Super secured to the ceiling by an M6 screw.	50	23591
 Akustik Super T47 +Sylomer® 50 Type A	Metal armor of the Akustik Super secured to the ceiling by an M6 screw.	50	23588
 Akustik Super T47 +Sylomer® 50 Type B	Metal armor of the Akustik Super secured to the ceiling by an M6 screw.	50	23589
 Akustik Super T60 +Sylomer® 75 Type A	Metal armor of the Akustik Super secured to the ceiling by an M6 screw.	75	23851
 Akustik Super T60 +Sylomer® 75 Type B	Metal armor of the Akustik Super secured to the ceiling by an M6 screw.	75	23852
 Akustik Super T47 +Sylomer® 75 Type A	Metal armor of the Akustik Super secured to the ceiling by an M6 screw.	75	23841
 Akustik Super T47 +Sylomer® 75 Type B	Metal armor of the Akustik Super secured to the ceiling by an M6 screw.	75	23842

AKUSTIK + sylomer[®] by getzner

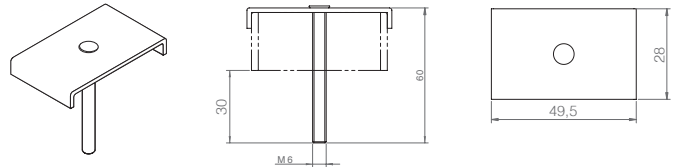
CEILING MOUNTS Akustik+Sylomer[®]: Models and dimensions



TYPE OF FIXING

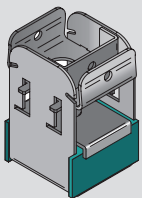
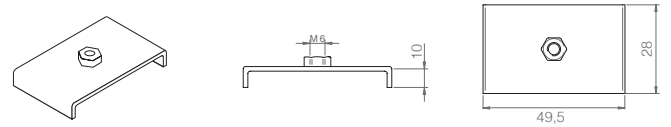
TYPE A

For installations where M6 male fixing is required, the recommended fixing is **Type A**.



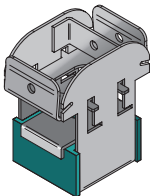
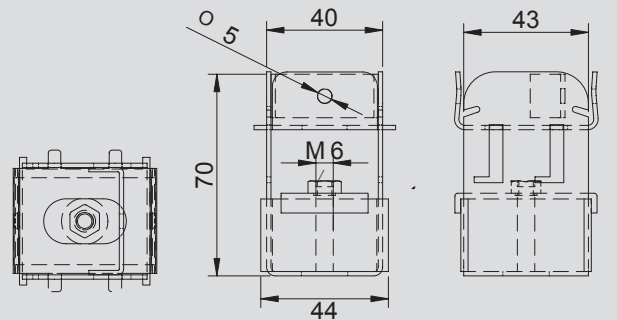
TYPE B

For installations where M6 female fixing is required, the recommended fixing is **Type B**.



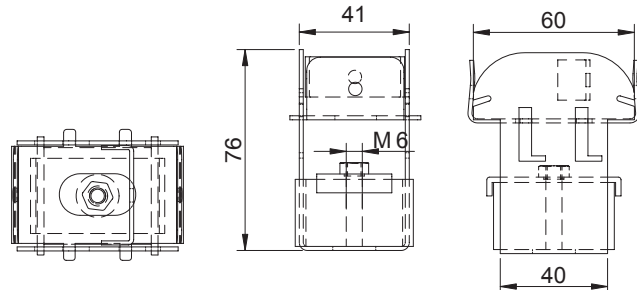
Akustik Super T47

The "SUPER" security feature is adaptable to the different profiles existing on the market.

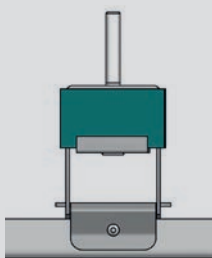


Akustik Super T60

The external dimension of the profiles that exist on the market may vary, our "SUPER" security system with lip adapts to the different lengths of the profile having a tight fit.



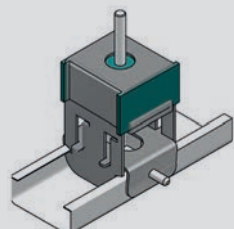
INSTALLATION STEPS OF AKUSTIK SUPER



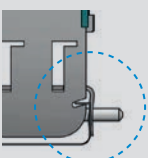
Detail A



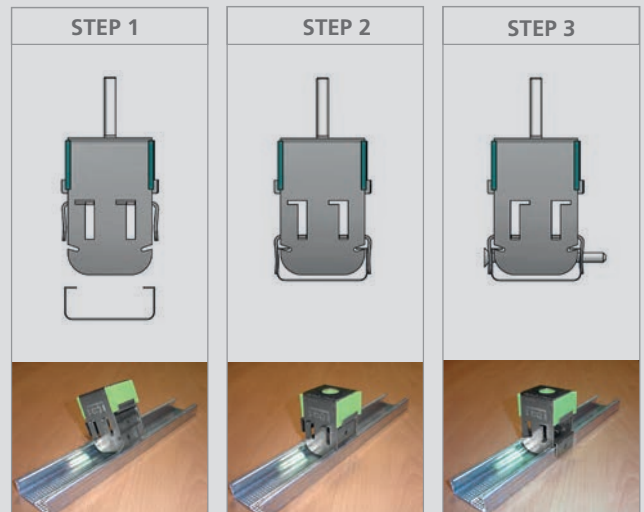
1• The security system is adaptable to different widths of profiles.



Detail B

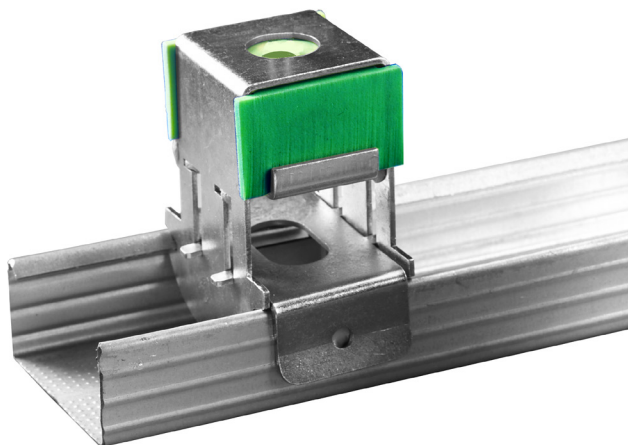


2• The "SUPER" security system admits the possibility of inserting a blocking screw.



Akustik Super T60

Utgåva Mars 2018



Installationsbeskrivning Sylomer® Superhängare

Sylomer® Superhängare är en effektiv elastisk hängare för undertak

Förväntad förbättring av luftljudsisolering i träbjälklag är ca 14 - 25 dB för trippel gipsskivor och upp till 22 dB för dubbla gipsskivor.

Förutsättningar

Sylomer® Superhängare (23832) levereras som "hona". Sylomer® Superhängare (23832) levereras med fäste för en M6-bult och är kompatibel med Gyproc GK-regel och Knauf CD 60/27 Profil.

Sylomer® Superhängare (23832) ska därför kompletteras med M6 gängstag och regler på byggplatsen.

Ungefärlig förbrukning

Med dubbel gips (c/c 600 mm x c/c 1200 mm):

Ca 1,6 stycken hängare/m²

Med trippel gips (c/c 600 mm x c/c 900 mm):

Ca 2 stycken hängare/m²

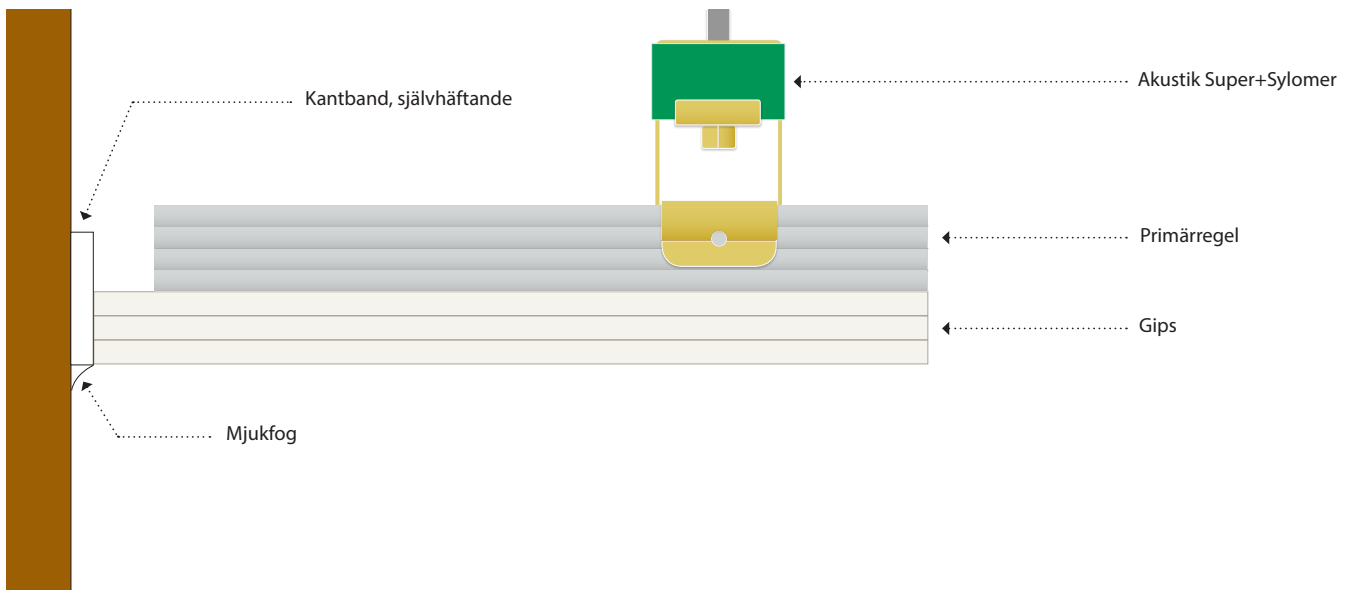
Installation:

1. Märk ut första raden hängare ca 100 mm ut från väggen
2. Märk ut första hängare i första raden 100 mm från väggen
3. Märk ut hängarna på c/c 1200 mm (dubbel gips); c/c 900 mm (trippel gips)
4. Märk ut andra raden 600 mm ut från första raden, förskjut i sidled från första raden
5. Fortsätt på samma sätt rad efter rad
6. Montera kantband på önskad höjd
7. Montera Sylomer® Superhängare
8. "Klicka i" Gyproc GK1-regeln alternativt Knauf CD 60/27 Profil
9. Skruva på gipsplattor
10. Säkerställ lufttätethet genom mjukfog runt om

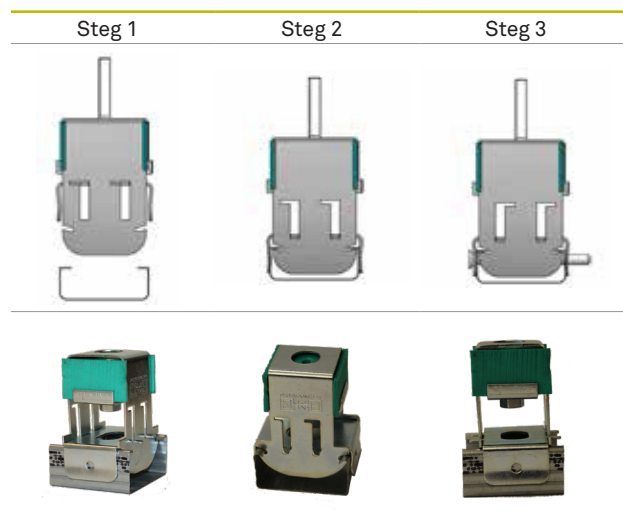
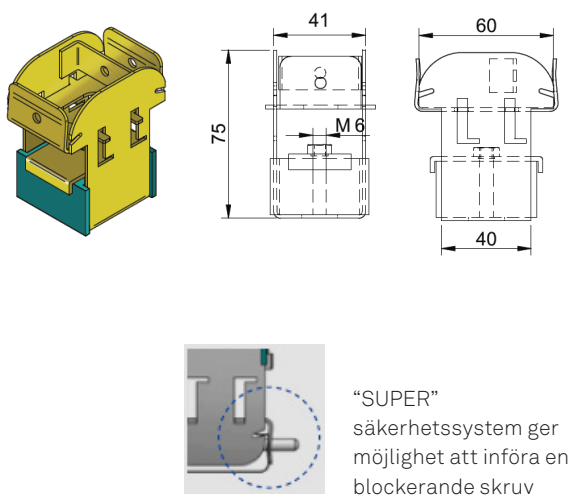


**CHRISTIAN
BERNER**

Expect more



Installationsbeskrivning Sylomer® Superhängare



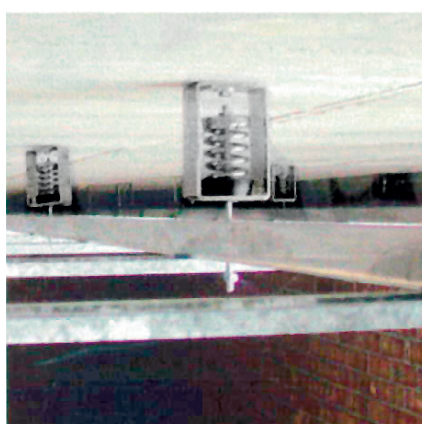
**CHRISTIAN
BERNER**

Expect more

ACOUSTIC HANGERS

VT ceiling hanger

	Type	MAX PERMANENT LOAD	Spring color	A (mm)	C (mm)	E (mm)	H(mm)	M	Weight (kg)	Code
	VT 15	15	BLACK	80	12	50	120	M-8	0,71	20200
	VT 25	25	BLACK	25	12	50	120	M-8	0,71	20201
	VT 50	50	BLUE	50	12	50	120	M-8	0,7	20202
	VT 75	75	GREY	75	12	50	120	M-8	0,72	20203
	VT 100	100	BEIGE	100	12	50	120	M-8	0,778	20204
	VT 125	125	WHITE	125	12	50	120	M-8	1,102	20211
	VT 150R	150	BLACK	80	12	50	120	M-8	0,77	20224
	VT 150	150	BLUE	150	16	80	160	M-12	2,035	20205
	VT 200	200	WHITE	200	16	80	160	M-12	2,072	20210
	VT 250	250	BLACK	250	16	80	160	M-12	2,148	20206
	VT 350	350	CREAM	350	16	80	160	M-12	2,33	20207
	VT 500	500	LIGHT GREY	500	18	100	180	M-14	4,785	20208
	VT 750	750	GREEN	750	18	100	180	M-14	5,249	20209

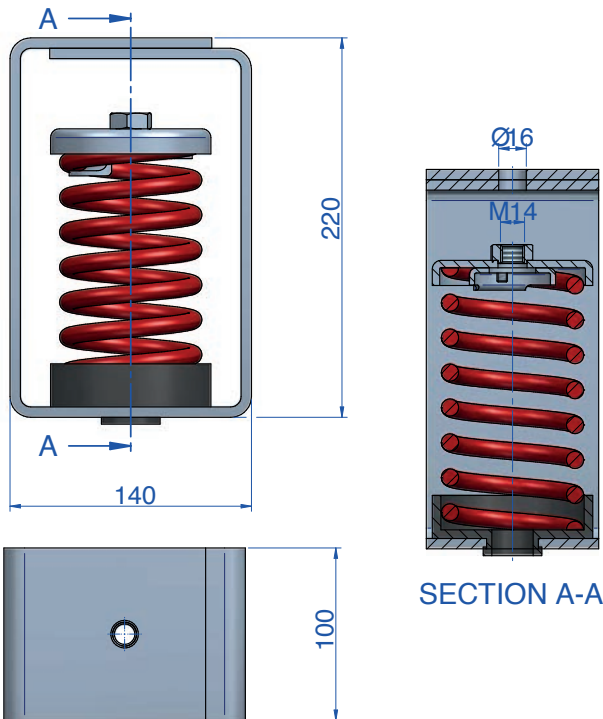


AKUSTIK+ AMC Mecanocaucho[®]

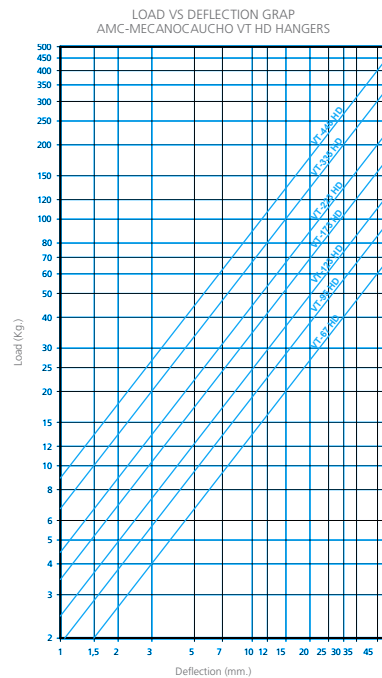
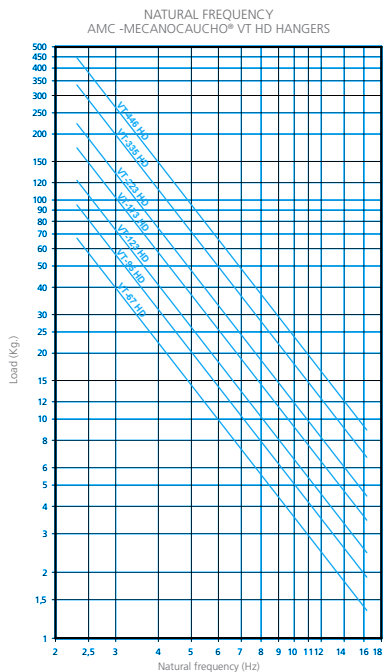
VT-HD

APPLICATIONS

AMC-MECANOCAUCHO[®] VT HD Hangers, due to their low stiffness, are able to reach natural frequencies from 2 to 5Hz, and are specially suitable for applications where high isolation level is required.

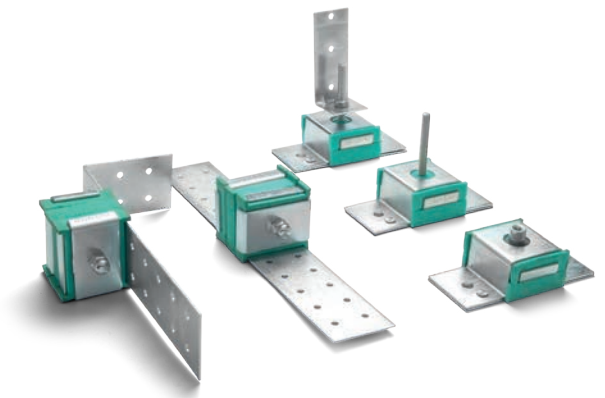


Type	MAX PERMANENT LOAD	Spring color	DEFLECTION mm	Code
VT-67 HD	67	BLUE	50	20235
VT-95 HD	95	WHITE	50	20239
VT-123 HD	123	BLACK	50	20236
VT-173 HD	173	BEIGE	50	20240
VT-223 HD	223	RED	50	20237
VT-335 HD	335	GREY	50	20241
VT-446 HD	446	GREEN	50	20238



ACOUSTIC WALL TIES

EP+Sylomer®: Models and dimensions

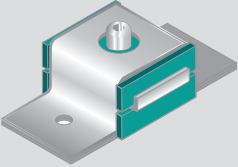


PRODUCT DESCRIPTION

Range designed for the floating suspension of soundproofed walls. Sylomer® avoids the transmission of vibrations while providing optimal acoustic results.

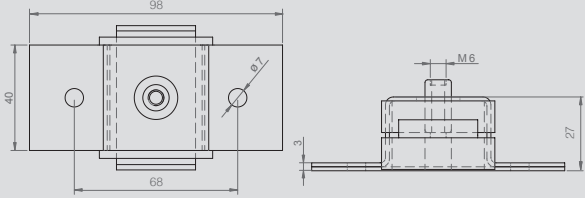
They have a "FAIL SAFE" rugged metal structure, which is overload-proof. Recommended for applications where fire or impact resistance is necessary.

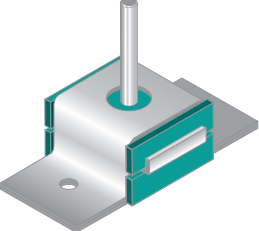
These mounts are also suitable for the isolation of vertical pipes, or any type of lightweight ducts that need to be isolated.



EP+Sylomer® Type B

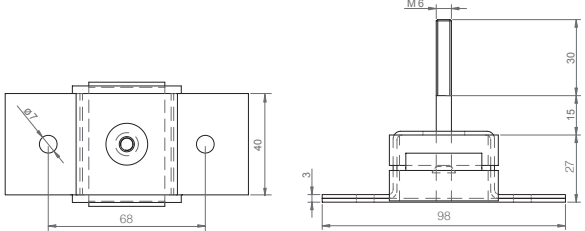
It is secured to the wall by means of two holes. It has a female M6 metal insert.

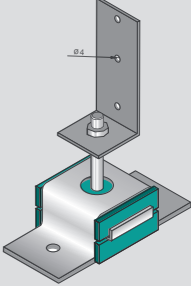




EP + Sylomer Type A

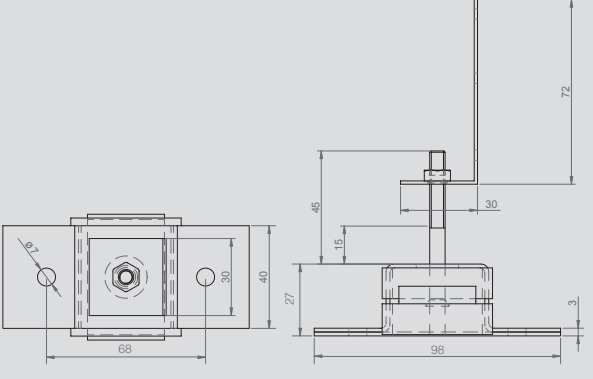
It is secured to the wall by means of two holes. It has a female M6 metal insert.

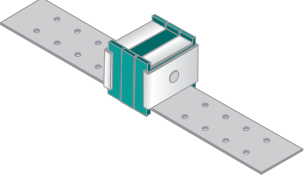




EP400 + Sylomer

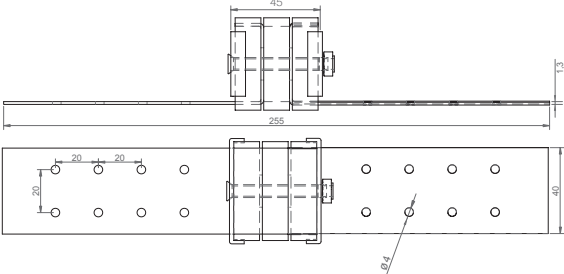
It is secured to the wall by means of two holes. It has a male M6 metal insert and also an "L" welded nut for securing to the profile.

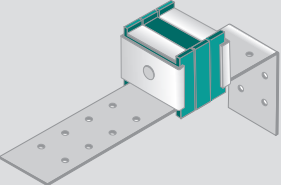




EP 600 + Sylomer

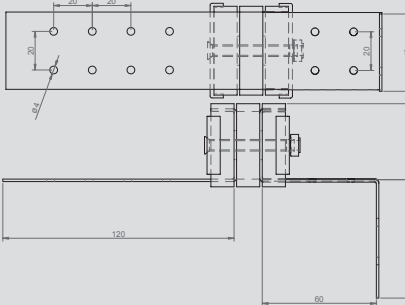
They are secured by two "predrilled" and easy-to-cut pins to facilitate their installation.





EP 650 + Sylomer

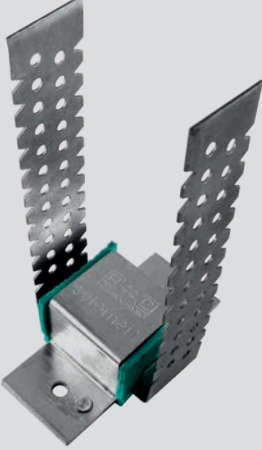
They are secured by two "predrilled" and bent pins to facilitate their installation. This principle can be used to make a wide range of variants. Contact us if you require a product more adapted to your building technique.



AKUSTIK + sylomer[®] by getzner

ACOUSTIC WALL TIES

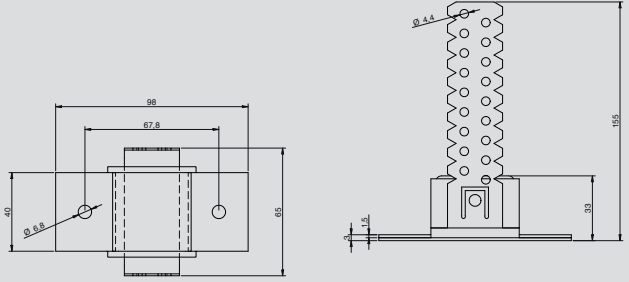
EP+Sylomer[®]: Models and dimensions

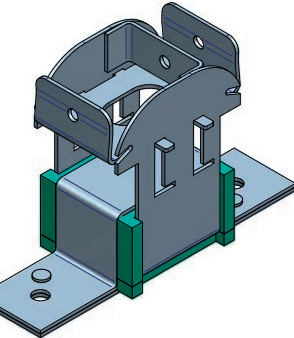


EP 700 + Sylomer

This wall mount has been designed to hold "C" profiles either in vertical or horizontal position.

Allows inclined ceilings with a simple and fast installation procedure.



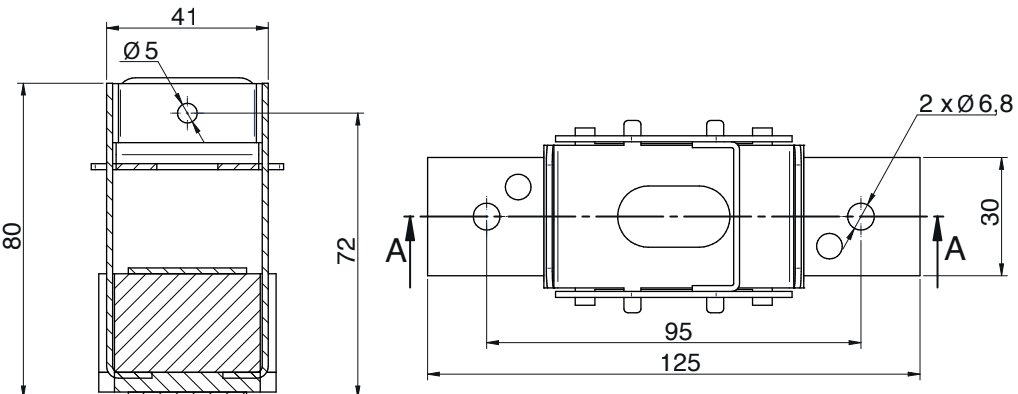


EP 700 Super + Sylomer

They are secured by two "predrilled" and bent pins to facilitate their installation.

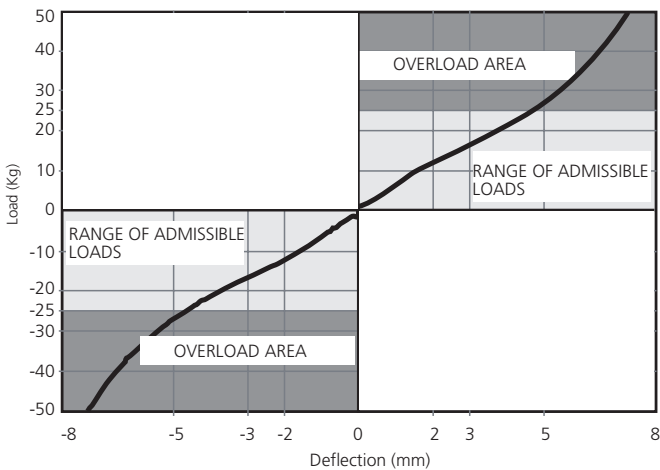
This principle can be used to make a wide range of variants.

Contact us if you require a product more adapted to your building technique.

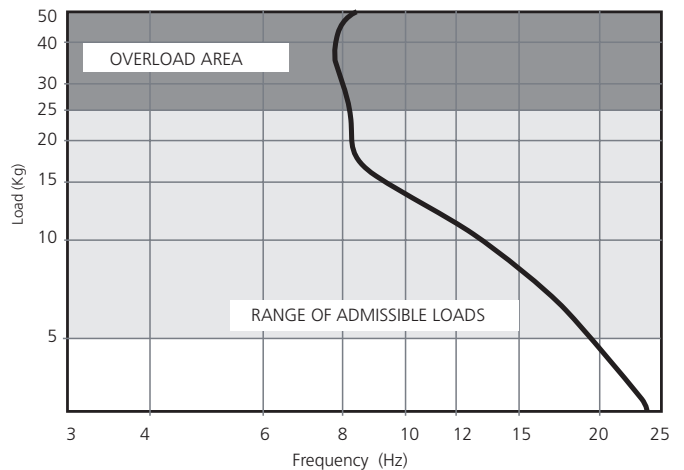


TECHNICAL CHARACTERISTICS

LOAD DEFLECTION GRAPH
EP Akustik+Sylomer[®]



NATURAL FREQUENCY GRAPH
EP Akustik+Sylomer[®]



ACOUSTIC WALL TIES EP+Sylomer® Range

	REF. AMC	MAX. LOAD (KG)	CODE
	EP + Sylomer Type B M6	25	23701
	EP + Sylomer Type B M8	25	23720
	EP + Sylomer Type A M6	25	23703
	EP 400 + Sylomer	25	23705
	EP + Sylomer Type A M8	25	23702
	EP 500 + Sylomer s35	60	23715
	EP 500 + Sylomer s65	60	23716
	EP 600 + Sylomer	25	23707
	EP 650 + Sylomer	25	23709
	EP 700 + Sylomer 30	30	23711
	EP 700 + Sylomer 75	75	23712
	EP 700 Super + Sylomer 30	30	23745
	EP 700 Super + Sylomer 75	75	23746

TSR+Sylomer® Models and dimensions

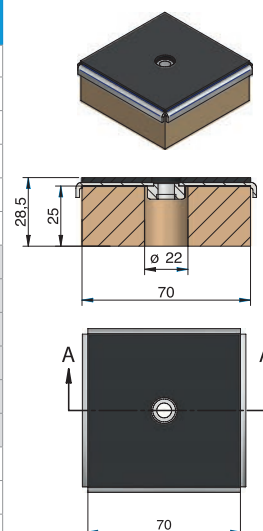
DESCRIPTION

The AMC-MECANOCAUCHO® TSR type anti-vibration mounts include a microcellular and resilient polyurethane compound for anti-vibration purposes called Sylomer®. This Sylomer® is oil resistant and with a temperature range of -30°C/+70°C. The TSR mounts can be fixed mechanically thanks to the internal nut incorporated to the metallic part that is treated with an antioxidant coat. This coating complies to the RoHS regulations.

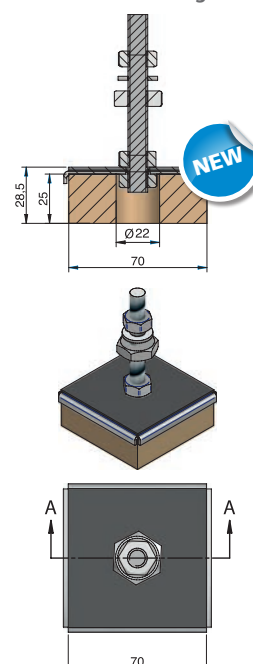
The above Chloroprene based rubber that is bonded to the metal acts as an anti-skid surface for those application where a mechanical fixation is not possible to be made. This layer provides an additional anticorrosive protection. In order to match the application, 6 different densities are supplied for a wide range of loads.



TSR without a levelling kit.



TSR with a levelling kit.



Type	Min. Load (Kg)	Max. Load (Kg)	Freq (Hz) Load Min	Freq (Hz) Max Load	CODE
TSR - 55 M8	10	25	23,8	11	157001
TSR - 110 M8	25	45	17,4	11,1	157002
TSR - 220 M8	45	75	16	11,1	157003
TSR - 450 M8	75	150	15,5	10,4	157004
TSR - 850 M8	150	250	14,2	11,1	157005
TSR - 1200 M8	250	300	11	10	157006
TSR - 55 M10	10	25	23,8	11	157008
TSR - 110 M10	25	45	17,4	11,1	157009
TSR - 220 M10	45	75	16	11,1	157010
TSR - 450 M10	75	150	15,5	10,4	157011
TSR - 850 M10	150	250	14,2	11,1	157012
TSR - 1200 M10	250	300	11	10	157013
TSR - 55 M12	10	25	23,8	11	157014
TSR - 110 M12	25	45	17,4	11,1	157015
TSR - 220 M12	45	75	16	11,1	157016
TSR - 450 M12	75	150	15,5	10,4	157017
TSR - 850 M12	150	250	14,2	11,1	157018
TSR - 1200 M12	250	300	11	10	157019
TSR-55 M8 + Lev Kit. M8x55	10	25	23,8	11	157101
TSR-110 M8+ Lev Kit. M8x55	25	45	17,4	11,1	157102
TSR-220 M8+ Lev Kit. M8x55	45	75	16	11,1	157103
TSR-450 M8+ Lev Kit. M8x55	75	150	15,5	10,4	157104
TSR-850 M8+ Lev Kit. M8x55	150	250	14,2	11,1	157105
TSR-1200 M8+ Lev Kit. M8x55	250	300	11	10	157106
TSR-55 M10+ Lev Kit. M10x90	10	25	23,8	11	157107
TSR-110 M10+ Lev Kit. M10x90	25	45	17,4	11,1	157108
TSR-220 M10+ Lev Kit. M10x90	45	75	16	11,1	157109
TSR-450 M10+ Lev Kit. M10x90	75	150	15,5	10,4	157110
TSR-850 M10+ Lev Kit. M10x90	150	250	14,2	11,1	157111
TSR-1200 M10+ Lev Kit. M10x90	250	300	11	10	157112
TSR-55 M12+ Lev Kit. M12x100	10	25	23,8	11	157113
TSR-110 M12+ Lev Kit. M12x100	25	45	17,4	11,1	157114
TSR-220 M12+ Lev Kit. M12x100	45	75	16	11,1	157115
TSR-450 M12+ Lev Kit. M12x100	75	150	15,5	10,4	157116
TSR-850 M12+ Lev Kit. M12x100	150	250	14,2	11,1	157117
TSR-1200 M12+ Lev Kit. M12x100	250	300	11	10	157118

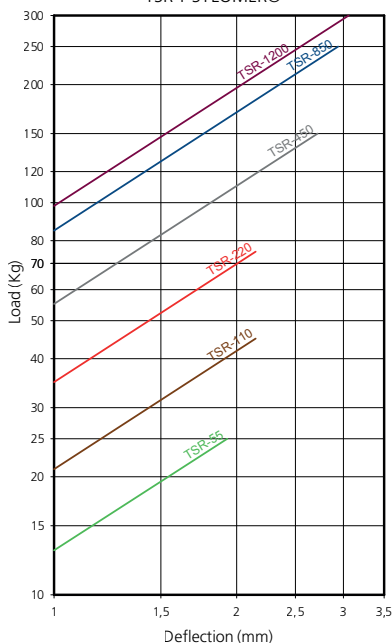
AKUSTIK + sylomer[®] by getzner

TSR+Sylomer[®] Range

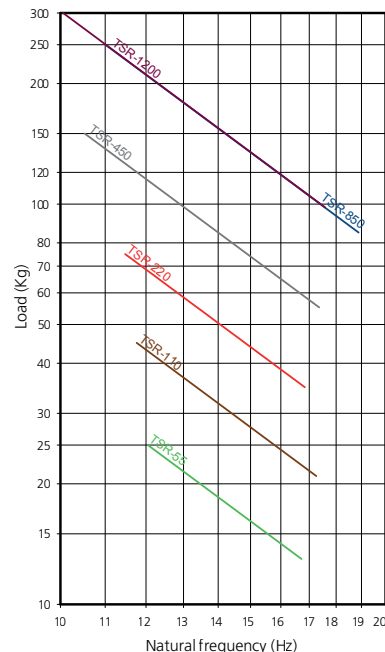
	REF. AMC	MAX. LOAD (KG)	CODE
	TSR 55+Sylomer [®]	25	157001
	TSR 110+Sylomer [®]	45	157002
	TSR 220+Sylomer [®]	75	157003
	TSR 450+Sylomer [®]	150	157004
	TSR 850+Sylomer [®]	250	157005
	TSR 1200+Sylomer [®]	300	157006



LOAD DEFLECTION CURVES
TSR + SYLOMER[®]



NATURAL FREQUENCY CURVES
TSR + SYLOMER[®]





CHRISTIAN BERNER

Expect more