



SERIES MULTI-FILL

MULTIPLE AUGER FILLING SYSTEMS

All-Fill 'Multi-Fill' Filling Systems provide fast, accurate, multi-position dispensing of powders and viscous products when used in conjunction with:

- Vertical Form-Fill-Seal machines
- Horizontal Thermoformers
- Stick-Pack Machines
- Horizontal Vacuum Forming Machines
- Pouch Makers
- Multiple Lane Indexing Machines

and other applications where a precise amount of product needs to be deposited at two or more positions simultaneously. Each system consists of multiple individually controlled servo-driven augers, variable speed agitation for each auger, common product hopper and control system to separately control dispensing at each fill position.



6 auger Multi-fill for installation on vertical form-fill-and-seal machine with motorised height adjustment

Each Multi-fill system is purpose-designed to suit the individual application. The number of filling nozzles (augers), centre distance between augers, nozzle (funnel) length, overall height etc. are matched to the host equipment. Tooling (auger, funnel, agitation blade) is designed to suit the powders to be filled, the output and accuracy levels required.

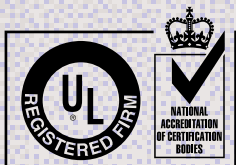


Duty/standby gantry installation with two 11 auger Multi-fills, 22 individually controlled servo drives with pre-selected acceleration/deceleration pattern, variable agitation speed to suit powder characteristics, complete with checkweigher feedback.



ALL - FILL INTERNATIONAL LIMITED
Unit 5 Gateshead Close • Sunderland Road
Sandy • Bedfordshire • SG19 1RS • UK

tel: +44 (0) 1767 691100
fax: +44 (0) 1767 681406
email: info@allfill.co.uk
website: www.allfill.co.uk



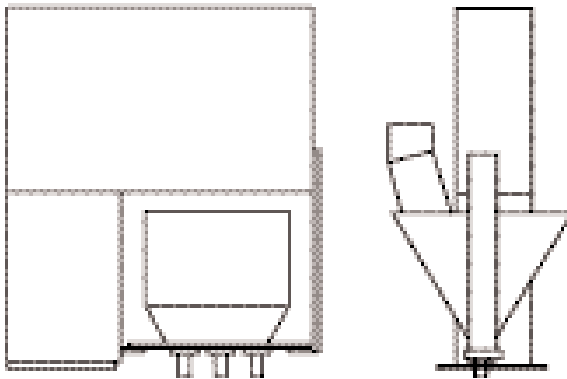
ALL-FILL INTERNATIONAL LIMITED
REGISTERED TO ISO 9001
CERTIFICATE NO. A6246

SERIES

MULTI-FILL

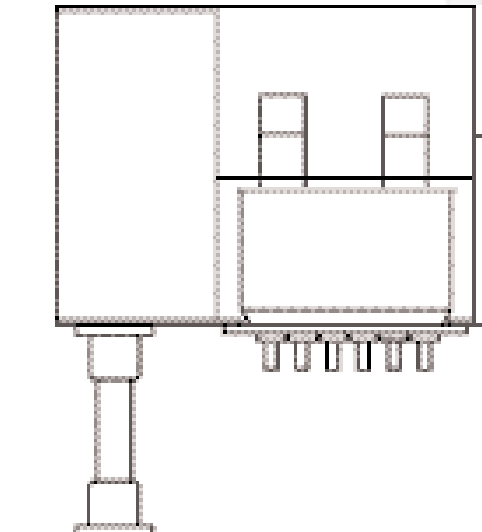
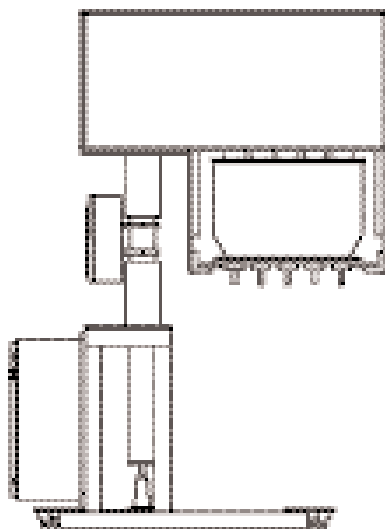
Filling nozzles:	3-12 (or more as required)
Minimum auger centres:	45mm
Maximum production output:	120 cycles per minute per head
Control:	PLC with full colour touch screen
Options:	Variable speed agitation Checkweigher feedback Motorised jacking Compartmentalised hoppers Bulk feed accessories
Head mounting:	Base plate, cantilever, gantry or portable frame (see below)
Control panel mounting:	On machine, wall-mounted or floor-standing console.

MOUNTINGS



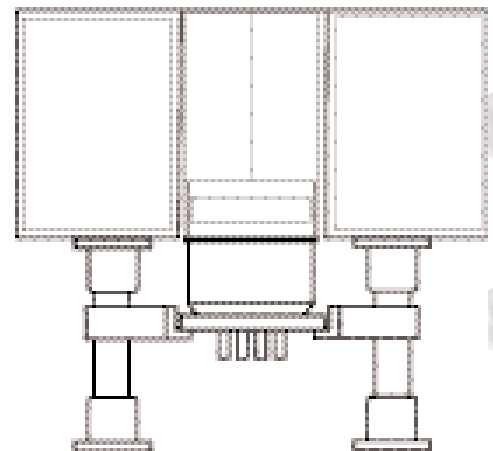
BASEPLATE MOUNTING

PORTABLE FRAME



CANTILEVER MOUNTING

GANTRY MOUNTING



ALL - FILL INTERNATIONAL LIMITED
Unit 5 Gateshead Close • Sunderland Road
Sandy • Bedfordshire • SG19 1RS • UK

tel: +44 (0) 1767 691100
fax: +44 (0) 1767 681406
email: info@allfill.co.uk
website: www.allfill.co.uk